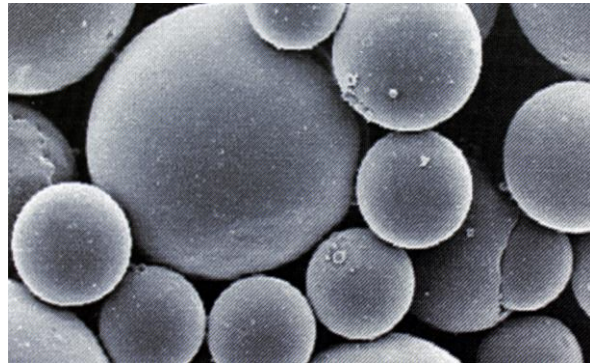


Fillite

Product Overview – Specialty Grades

Chemical Properties:

SiO ₂	50 – 60 %
Al ₂ O ₃	34 - 42 %
Fe ₂ O ₃	≤ 2 %
CO ₂ (content in the spheres)	70 %
N ₂ (content in the spheres)	30 %
Loss on ignition (1000oC)	≤ 2 %



	SGHA	SGHA-LF	300W	160W	106W	
Typical Particle Size Range:	5-500	5-500	5-355	5-180	5-106	
<u>Particle Size Distribution:</u>						
% passing 500 µm	98-100	98-100	99.5-100	-	-	
% passing 300 µm	85-100	85-100	97-100	100	-	
% passing 180 µm	-	-	-	99.5-100	-	
% passing 150 µm	30-70	≤50	40-70	-	100	
% passing 125 µm	-	≤33	-	-	-	
% passing 106 µm	10-30	5-10	10-30	-	99.5-100	
% passing 100 µm	-	-	-	30-80	-	
% passing 90 µm	-	≤13	-	-	-	
% passing 63 µm	-	≤5	-	-	-	
% passing 50 µm	2-10	-	2-10	10-20	15-30	
<u>Physical data:</u>						
Average Loose bulk density	g/cc	0.35-0.48	0.35-0.48	0.35-0.48	0.35-0.48	0.35-0.48
Colour		Off White	Off White	Off White	Off White	Off White
Packing Factor	%	60-65	60-65	60-65	60-65	60-65
Melting Temperature	oC	1400	1400	1400	1400	1400
Typical Crush Strength	psi	2000-4000	2000-4000	2000-4000	2000-4000	2000-4000

® Registered Trademark of the Omya Group

The information contained in this document relates only to the specific material designated herein and does not relate to use in combination with any other material or in any process. The information provided herein is based on technical data that Omya believes to be reliable, however Omya makes no representation or warranty as to the completeness of accuracy thereof and Omya assumes no liability resulting from its use or for claims, losses, or damages of any third party. Recipients receiving this information must exercise their own judgement as to the appropriateness of its use, and it is the user's responsibility to assess the materials suitability (including safety) for a particular purpose prior to such use.

edition : 09.05.2014
SALES LIT GBRN
version : 3