



Skin Care

Natural Minerals for
Skin Care Products



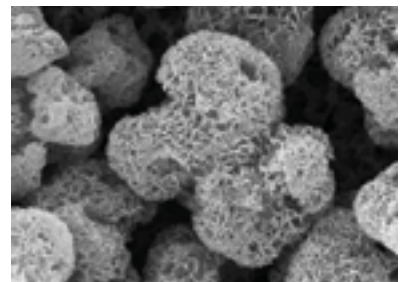
THINKING OF TOMORROW



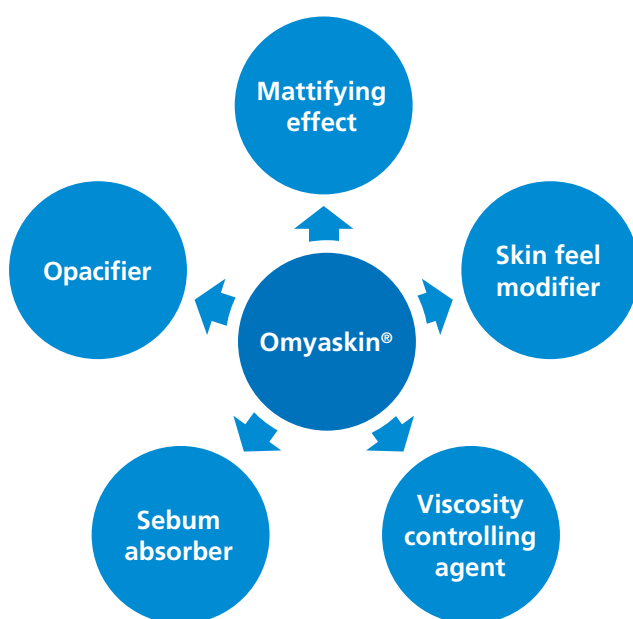
Let Nature Take Care

Omyaskin® in Creams & Emulsions

Omyaskin® innovative particles offer greater porosity and a larger surface area than conventional Calcium Carbonate. These structural features allow for improvements in the effectiveness of sebum absorption and skin feel, while simultaneously easing the production process.



INCI: Hydroxyapatite
(and) Calcium Carbonate



Benefits

- *Silky touch¹⁾*
- *Reduces stickiness*
- *Increases viscosity*
- *Mattifying effect*
- *Provides high absorption*
- *Decreases greasy & oil feel*

¹⁾ 46.7% of panelists perceived the residue as silky

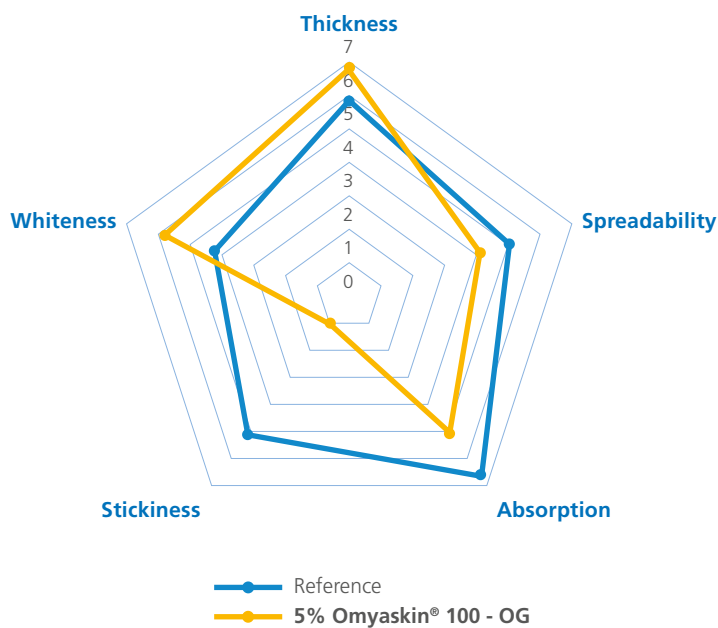


Figure 1: Sensory profile in cream based on 5% Omyaskin® 100 - OG

Sebum Absorber

Omyaskin® is an efficient sebum absorber - Sebum rate is decreased by 29% in 82% of test subjects.²⁾

²⁾ Facial cream with 5% Omyaskin® 100 - OG, applied to facial skin once a day for 28 days; n= 22 subjects; method: Sebumeter

Mattifier

Omyaskin® works as an efficient mattifying agent - 12% reduction of gloss is observed in 91% of test subjects.³⁾

³⁾ Facial cream with 5% Omyaskin® 100 - OG, applied to facial skin once a day for 28 days; n= 22 subjects; method: Skin-Glossometer GL 200 probe (Courage & Khazala)



enhanced
by Omya



Omyacare® in Soap Bars

In soap bars, Omyacare® is more than just a filler. It enhances the creaminess attribute as well as the amount and speed of foam generation. The brightness of the particles allows manufacturers to produce white bright soap bars with a natural appearance. Omyacare® helps to maintain the weight of the soap bar in a smaller bar volume and thus reduces costs.

Omyacare® contributes to foam generation speed and increases foam and creaminess.⁴⁾

⁴⁾ According to a specific protocol panelists washed their hands using bar soap with 5% Omyacare® S 70 - KP, n= 10 panelists; method: in vivo testing

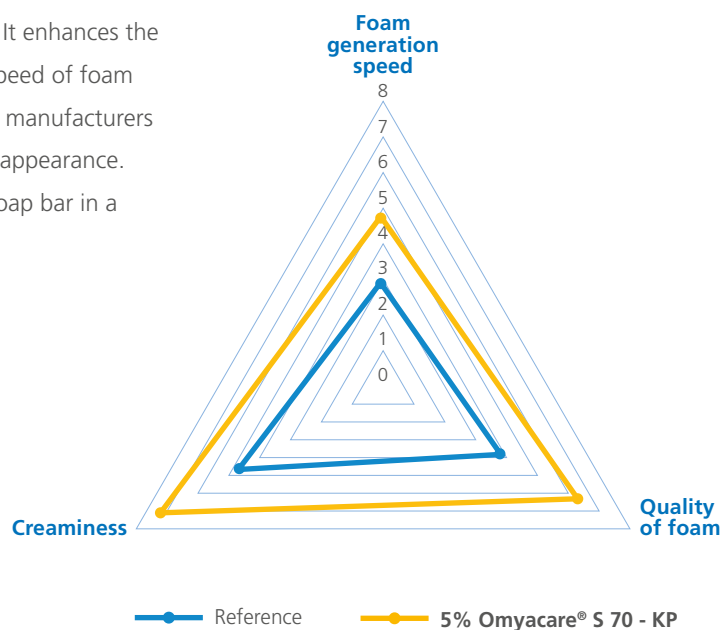


Figure 2: Sensory profile in soaps based on 5% Omyacare® S 70 - KP, $p < 0.0001$ vs reference

Guide formulation: Soap bar containing 5% Omyacare® S 70 - KP for improved opacity

Ingredients	INCI Nomenclature	% w / w
Toilet Soap Noodles BV 601	Sodium Palmate (and) Sodium Palm Kernelate	90.00
Coconut Oil	Cocos Nucifera (Coconut) Oil	5.00
Omyacare® S 70 - KP	Calcium Carbonate	5.00
Perfume	Aroma	q.s
		100

Procedure

- 1 Mix soap noodles intensively with all ingredients for 10-15 minutes.
- 2 After mixing, refine and homogenize the soap base by means of the soap extruder using the drilled plate.
- 3 Extrude the soap base using the extrusion cone.
- 4 Cut the final soap into desired length or press it into a shape.

Omyacare® - Preferred types for soap bars

	Omyacare® S 80 - AV	Omyacare® S 70 - KP	Omyacare® S 90 - KP	Omyacare® S 80 - AL	Omyacare® S 90 - AL
d50% (µm)	5.0	5.5	3.0	4.8	3
d98% (µm)	30	25	13	28	11
R(y) (%)	95	97	97	90.5	91.5
Remarks	Very low dusting, bright marble			Very low dusting, limestone Cosmos certified	



Fine grades with high brightness are preferred for white soap bars. Omyacare® S 70 - KP is the best choice in terms of wet cracking & opacity.





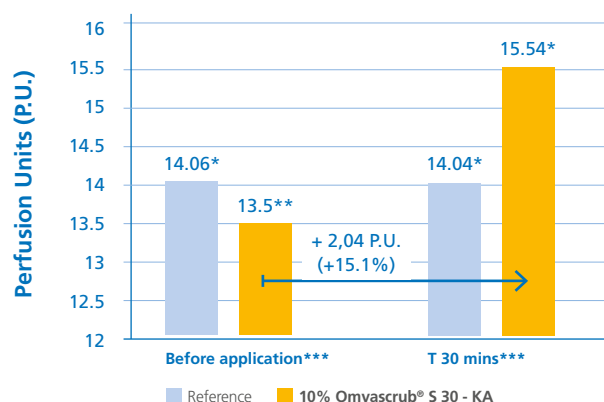
Omyascrub® in Body Scrub

Omyascrub® is an exfoliating agent that improves skin uniformity with no erythema effects. This Cosmos certified mineral grade activates microcirculation in the skin leading to skin cells renewal.

Benefits

- *Rejuvenates skin, bringing back its natural glow*
- *Increases skin blood circulation*
- *Mineral, non irradiated*
- *Gentle exfoliation*
- *Natural solution (Cosmos certified)*
- *Effective from 5 to 20%*

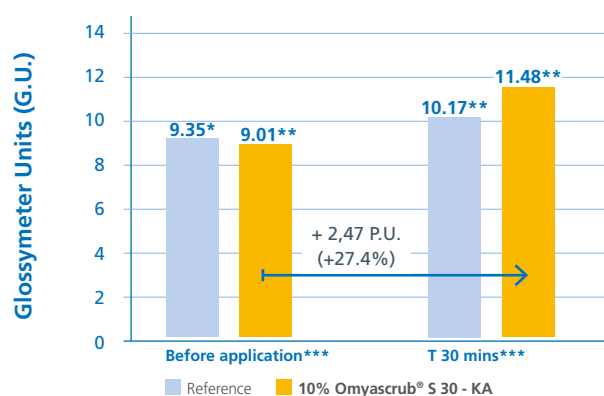
Technical facts



*Reference: $p > 0,05$ **Omyascrub®: $p < 0,0001$ ***Reference vs Omyascrub®: $p < 0,01$

Figure 3: Blood micro-flow

Omyascrub® S 30 - KA shows a significant improvement in blood micro-flow. It is able to increase blood micro-flow which is linked to skin appearance and texture.



*Reference: $p > 0,05$ **Omyascrub®: $p < 0,0001$ ***Reference vs Omyascrub®: $p < 0,01$

Figure 4: Skin glow

Compared to the reference, Omyascrub® S 30 - KA stimulates stratum corneum cells renewal. This rejuvenates the overall tone and texture of the skin, giving a healthy, pretty glow.

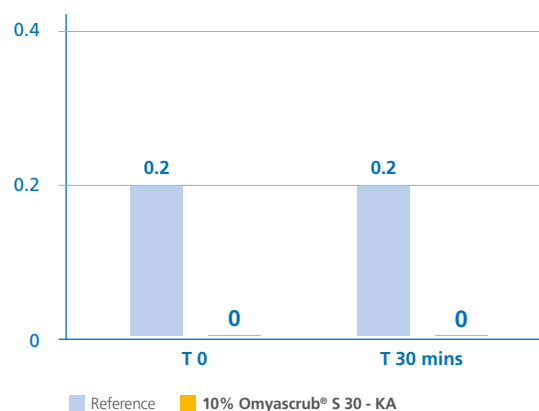


Figure 5: Erythema evaluation - scale from 0 to 3:
No reaction: 0; Mild: 1; Moderate: 2; Severe: 3

Omyascrub® S 30 - KA is a gentle exfoliating agent resulting in no skin irritation / redness after application.



Omya Consumer Goods

+41 62 789 29 29
info.cosmetics@omya.com

Omya International AG
CH-4665 Oftringen
www.omya.com



THINKING OF TOMORROW

Omya has taken every possible care to ensure that the information herein is correct in all aspects. However, Omya cannot be held responsible for any errors or omissions which may be found herein, nor will it accept responsibility for any use which may be of the information, the same having been given in good faith, but without legal responsibility. This information does not give rise to any warranties of any kind, expressed or implied, including fitness for purpose and non-infringement of intellectual property. The technical information presented comprises typical data and should not be taken as representing a specification. Omya reserves the right to change any of the data without notice.

**THIS PAPER CONTAINS
OMYA PIGMENTS**